

CJ

CharlotteJames
FURNITURE

2017 ADDITIONS



WELCOME TO CHARLOTTE JAMES FURNITURE

luxury | quality | handmade

As a family-run company, Charlotte James Furniture has been manufacturing luxury furniture since 2003. With a trade-only client base, we work exclusively with interior designers, architects and specifiers both throughout the UK and internationally. Synonymous with quality craftsmanship, our wide-ranging projects span from boutique hotels and private residences, to 5* resorts and restaurants.

All Charlotte James furniture is manufactured under one roof at our Edinburgh-based workshop. During manufacture, each piece of furniture is overseen by a nominated craftsman from our ever-expanding team of skilled upholsterers, sewers, polishers and cabinet makers. This ensures our ethos remains the same: to produce high quality, beautifully designed and wonderfully comfortable furniture.

Our showroom offers customers and their clients an opportunity to browse our range of furniture, guided by a dedicated member of our sales team. From placing a furniture order to dispatch, we pride ourselves in providing excellence in customer service and expert advice to fulfil your project requirements.





*The Flora's unique fixed side cushions
set it apart from our other sofas.*

FLORA *sofa*

SOFA WIDTH	180, 200, 220cm	SEAT DEPTH	53cm
DEPTH	80cm	ARM HEIGHT	68cm
HEIGHT	68cm	SEAT CUSHION	Feather wrapped foam
SEAT HEIGHT	49cm	BACK CUSHION	Feather



With its clean lines, high back and generous seat depth the Mason epitomises luxury and comfort.

SOFA WIDTH	200, 230, 250cm	SEAT DEPTH	58cm
DEPTH	100cm	ARM HEIGHT	73cm
HEIGHT	79cm	SEAT CUSHION	Luxe feather wrapped foam
SEAT HEIGHT	54cm	BACK CUSHION	Feather

MASON *sofa*



The Morven is one of our deepest sofas and is the first in the range to have our new, striking metal plinth with shadow gap detail.

MORVEN *sofa*

SOFA WIDTH	200, 220, 280cm	SEAT DEPTH	73cm
DEPTH	110cm	ARM HEIGHT	63cm
HEIGHT	70cm	SEAT CUSHION	Feather wrapped foam
SEAT HEIGHT	46cm	BACK CUSHION	Feather
METAL FINISH	Blackened Steel		



The Murray features striking timber-framed arms with upholstered sides and recessed plinth.

SOFA WIDTH	180, 200, 220cm	SEAT DEPTH	51cm
DEPTH	91cm	ARM HEIGHT	67cm
HEIGHT	79cm	SEAT CUSHION	Feather wrapped foam
SEAT HEIGHT	53cm	BACK CUSHION	Feather

MURRAY *sofa*



With its clean, contemporary lines and powder-coated steel frame, this chair makes a stylish statement in any interior.

DAMIAN *chair*

CHAIR WIDTH	80cm	SEAT DEPTH	58cm
DEPTH	91cm	ARM HEIGHT	67cm
HEIGHT	90cm	SEAT CUSHION	Foam
SEAT HEIGHT	49cm	BACK CUSHION	Foam
METAL FINISH	Powder-coated Steel		



*Supremely sophisticated,
the Leslie Chair cuts a dash with
its elegant arm detail.*

CHAIR WIDTH	67cm	SEAT HEIGHT	41cm
DEPTH	62cm	SEAT DEPTH	53cm
HEIGHT	75cm	ARM HEIGHT	75 cm

LESLIE *chair*



*A playful addition to the range,
the Mavis radiates retro flair.*

MAVIS *swivel chair*

CHAIR WIDTH	87cm	SEAT DEPTH	55cm
DEPTH	86cm	ARM HEIGHT	63cm
HEIGHT	82cm	SEAT CUSHION	Foam
SEAT HEIGHT	48cm		



Renee’s distinctive metal plinth adds a touch of glamour to this versatile stool.

RENEE
stool

WIDTH	80cm	METAL FINISH
DEPTH	80cm	Blackened Steel / Antique Brass /
HEIGHT	40cm	Satin Brass
SEAT HEIGHT	40cm	



Effortlessly understated, the Sebastian Stool incorporates a metal frame and panel-stitched detailing.

SEBASTIAN
stool

WIDTH	120cm	METAL FINISH
DEPTH	90cm	Blackened Steel / Antique Brass /
HEIGHT	45cm	Satin Brass
SEAT HEIGHT	45cm	



Featuring versatile seating, a removable tray and beautiful metal frame, this bench complements the popular Evan Side Table.

WIDTH	162cm
DEPTH	56cm
HEIGHT	50cm
SEAT HEIGHT	50cm

METAL FINISH
Blackened Steel / Antique Brass / Satin Brass

EVAN *bench*



The stylish Evan side table features a unique removable tray in a wood finish of your choice. Also available with a timber or mirrored top.

EVAN *side table*

<i>with Bronze Mirror</i>					
WIDTH	53cm	DEPTH	53cm	HEIGHT	50cm
<i>with Tray</i>					
WIDTH	53cm	DEPTH	53cm	HEIGHT	50cm
METAL FINISH <i>Blackened Steel / Antique Brass / Satin Brass</i>					



Crisp and clean, this nest of tables is a versatile and adaptable piece of furniture.

JOCELYN *nest of tables*

DIAMETER	54cm	HEIGHT	62cm
DIAMETER	34.5cm	HEIGHT	55cm
DIAMETER	26.5cm	HEIGHT	48cm

METAL FINISH *Blackened Steel / Antique Brass / Satin Brass*

Available in standard timber finishes, stone and glass available upon request.



Simple and elegant, the Antoine table features a floating stone top and fine metal base.

ANTOINE *table*

WIDTH 65cm : DEPTH 35cm : HEIGHT 63cm

METAL FINISH Blackened Steel / Antique Brass / Satin Brass

STONE TOP FINISH See end of brochure for stone options.



This classic table complete with antique mirror top is a sophisticated and minimalist addition to any living space.

AUDREY *side table*

WIDTH 44.5cm : DEPTH 44.5cm : HEIGHT 60cm

METAL FINISH Blackened Steel / Antique Brass / Satin Brass
Antique Mirror Top

CHATTON *range*

*side
table*



*console
table*



*3-drawer
chest*



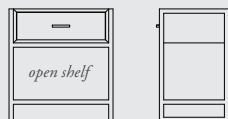
*4-drawer
chest*



bench

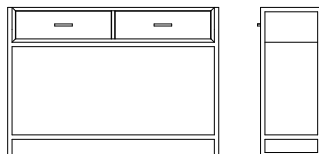


*The Chatton range is highlighted by its feature metalwork frame and sleek metal handles.
Combine preferred timber and metal finishes to suit any scheme.*



side table

WIDTH 60cm ∴ DEPTH 40cm ∴ HEIGHT 65cm



console table

WIDTH 120cm ∴ DEPTH 35cm ∴ HEIGHT 85cm



3-drawer chest

WIDTH 80cm ∴ DEPTH 55cm ∴ HEIGHT 84cm



4-drawer chest

WIDTH 120cm ∴ DEPTH 55cm ∴ HEIGHT 84cm



bench

WIDTH 112cm ∴ DEPTH 35cm ∴ HEIGHT 65cm
SEAT DEPTH 35cm ∴ ARM HEIGHT 65cm

METAL FINISH
(AVAILABLE ON ALL PIECES)

Blackened Steel / Antique Brass / Satin Brass



The striking Grant console table features a stone top and curved legs, ideal for a hallway or living space.

GRANT *console table*

WIDTH 125cm : DEPTH 30cm : HEIGHT 83.5cm

METAL FINISH *Blackened Steel*

STONE TOP FINISH *See end of brochure for stone options.*



With its striking back-to-back curved base, the Grant Coffee table echoes the simple elegance of the Grant Console.

GRANT *coffee table*

WIDTH 125cm : DEPTH 56cm : HEIGHT 46cm

METAL FINISH *Blackened Steel*

STONE TOP FINISH *See end of brochure for stone options.*



With its distinctive stone top and shelf, the bold, clean lines of the Logan side table make this a standout piece of furniture.

LOGAN *side table*

WIDTH 78.7cm | DEPTH 38.7cm | HEIGHT 60cm

METAL FINISH Blackened Steel / Antique Brass / Satin Brass

STONE TOP FINISH See end of brochure for stone options.



The Logan Coffee Table is an enlarged version of the Logan side table, making it the perfect focal point of your seating area.

LOGAN *coffee table*

WIDTH 78.7cm | DEPTH 78.7cm | HEIGHT 46cm

METAL FINISH Blackened Steel / Antique Brass / Satin Brass

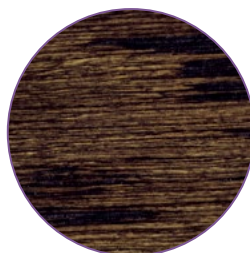
STONE TOP FINISH See end of brochure for stone options.

FURNITURE *specifications*

*Examples of
wood finishes*



driftwood



dark oak



light oak



limed dark oak



limed oak



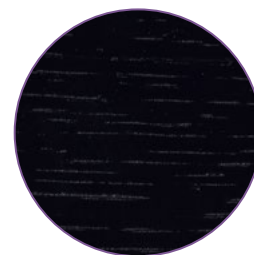
medium oak



pebble



walnut



wenge

Each piece of Charlotte James furniture is made using the finest kiln-dried hard wood, with frames glued and screwed. Fabric is then inspected and cut by hand to ensure pattern matching and quality control, prior to each piece of furniture being upholstered by our skilled craftsmen.

As experts in the industry, we are dedicated to finishing our products to the highest possible standard. We understand that taste and preferences vary from project to project, which is why we offer an impressive selection of finishing options.

Wood finishes

We have a standard range of wood colours. Alternative finishes are available, including individual colour matching or a painted finish on request.

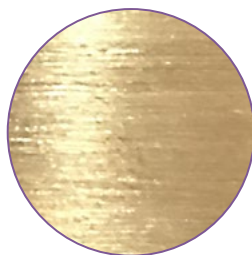
*Metal and stone samples are available on a returnable basis.
Please contact enquiries@charlottejamesfurniture.com*



blackened steel



antique brass



satin brass

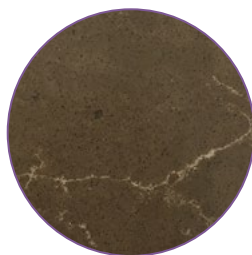
*Examples of
metal and stone
finishes*



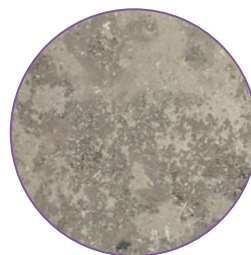
moleanos



coral clay



iron bark



jura grey



travertine (veined)

Metal finishes

Blackened Steel is a sleek and versatile finish which complements any colour scheme. Antique and Satin brass have warm and sophisticated tones which contrast well with all our timber finishes.

Stone finishes

We have a range of five standard stone finishes varying in grain and colour. Alternative finishes are available on request.

Notes

Due to the natural variances in the grain pattern of the stone and colour tones of the metal finishes, an exact match is not guaranteed.

FURNITURE *specifications*

*Examples of
furniture details*



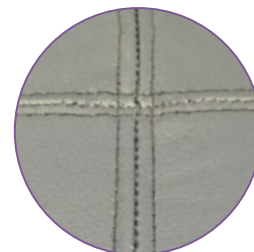
top stitch



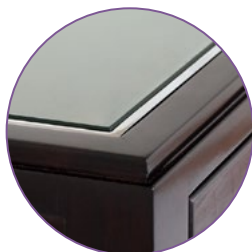
deep buttoning



fluting



saddle stitch



chrome inlay



panel stitch



piping



pulled button



studding

Seat cushion fillings

We have specified our recommended cushion fillings for each product listed in our range. We do, however, understand that cushion fillings are dependent on individual comfort preferences. Please contact us if you wish to discuss your requirements.

Cushion care

All cushions need regular maintenance to retain their shape and comfort levels. This can be achieved by regular plumping and turning.

Bespoke furniture

We believe the Charlotte James Furniture range is comprehensive but also understand that personal preferences vary. Should you wish to adjust a design to suit practical or aesthetic requirements, we will do our best to accommodate.

*For questions or to request samples of wood finishes or studs,
please contact enquiries@charlottejamesfurniture.com*



brass



bronze renaissance



dark antique

*Examples of
stud finishes and castors*



nickel



old gold speckled



pewter



square brass castor



round chrome castor

Studs

Several pieces of furniture in our range have studding detail and we have an assortment of sizes and finishes to enhance your piece, in addition to those detailed. Alternatively, we can add studs to furniture that doesn't already have it, or replace it with piping where possible.

Castors

Specified items in our brochure are fitted with castors as standard, available as a square tapered leg with castor, and turned leg with castor.

Finishes include polished brass and polished chrome. Other finishes are available on request.

Notes

Due to the natural variances in the underlying colour tones of different timbers, the effect of grain pattern and the way timber is cut means that an exact match is not guaranteed.

Due to the man-made nature of our items, all sizes should be taken as a guide, a manufacturing tolerance may apply.

CHARLOTTE JAMES

contract furniture

Charlotte James is proud to be a customer-focused, design-led manufacturer of quality contract furniture, offering solutions for premium commercial projects throughout the UK and abroad.

As well as knowledge and passion for the products, building trusted partnerships is at the core of our success. We work closely with individual clients, designers, specifiers and architects to offer a fully integrated design and manufacturing service.

From initial site visits to supplying individual CAD drawings for each project, our tailored approach ensures your project specifications are always met, both within time and to budget.

1. *Gleneagles Hotel*
2. *Cromlix Hotel*
3. *Dowans Hotel*
4. *The Pompadour by Galvin*
5. *Waldorf Astoria, The Caledonian*
6. *Hilton Glasgow*
7. *Private residence*



INDUSTRY
PARTNER

BCFA
member





CHARLOTTEJAMESFURNITURE.COM

Charlotte James Furniture Ltd.

7a Main Street
Pentland Industrial Estate
Edinburgh
EH20 9QH

Phone 0131 448 2133

Fax 0131 448 0374

Email enquiries@charlottejamesfurniture.com

